

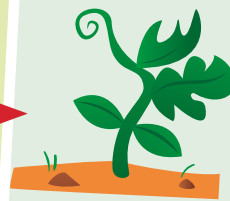
1 Look at the pictures. What do you think the text is about?

The Food Chain



the Sun

Plants and animals need food to live and grow, and it all starts with the Sun!



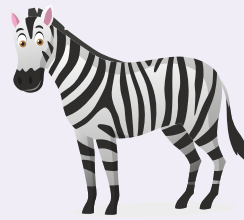
producer

Plants use light from the sun to make their food. They're **producers**. Animals eat food to get energy. They're **consumers**.



secondary consumer

Secondary consumers, like lions and crocodiles, eat primary consumers. Animals that eat other animals are called **carnivores**.



primary consumer

Primary consumers, like zebras and elephants, eat plants. Animals that eat plants are called **herbivores**.

Some animals, like birds and monkeys, are **omnivores**. They can be primary consumers (when they eat plants) and secondary consumers (when they eat other animals).

2))) Listen and read. What do omnivores eat?

1 Look and circle.



1 herbivore / omnivore



2 carnivore / herbivore



3 omnivore / carnivore



4 herbivore / carnivore

2 Read and write T (True) or F (False).

- 1 Herbivores eat carnivores.
- 2 Animals can be producers.
- 3 Carnivores eat animals.
- 4 Omnivores eat plants and animals.

3 Ask and answer with a friend.

Are giraffes carnivores?

No, they aren't!

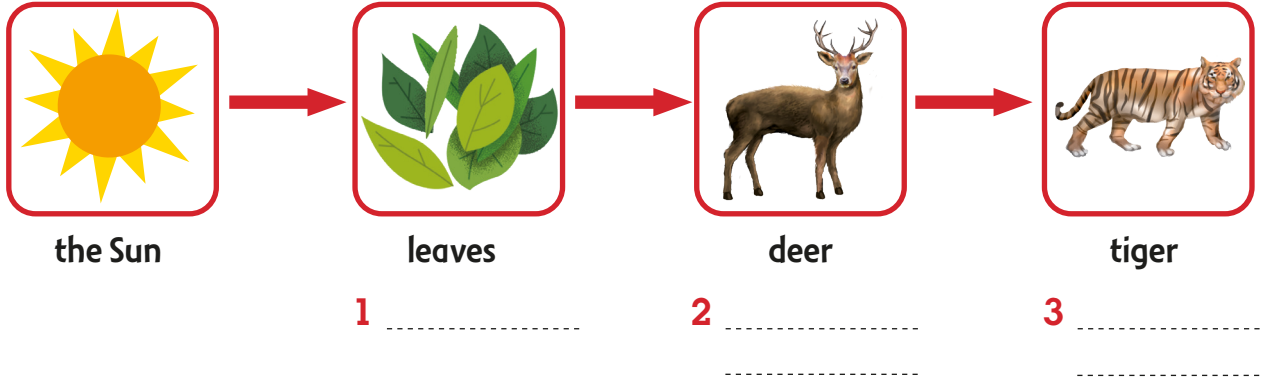
Did You Know?

Most animals eat different kinds of food, so they are part of different food chains.

Time to Think

1 Complete the food chain with words from the box.

primary consumer producer secondary consumer



2 Look and match.



producer



primary
consumer



secondary
consumer





Prepare and Create

- 1 Work together and follow the instructions.
 - 1 Choose plants and animals to make a food chain mobile.
 - 2 Cut out paper circles. Draw the Sun, the plants, and the animals you chose.
 - 3 Make a hole at the top and bottom of each circle. Use string to tie the circles together and make your mobile.

Showcase

- 2 Share your food chain mobile with the class.

